

# LOOKING FOR A BETTER & FASTER CEILING SOLUTION?



## PROTILE™

Vinyl Laminate  
Gypsum Ceiling Tiles



# PROTILE™

## Vinyl Laminate Gypsum Ceiling Tiles

ARISH™ Gypsum Ceiling Tiles comes in a wide variety of decorative vinyl laminates, which are recognized in providing aesthetic appearance along with the long lasting and low maintenance.

ProTile™ can also be supplied with polished Aluminum foil backing. The aluminum foil backing on the ceiling tiles increase the thermal insulation properties and additionally provides a protective vapor barrier in high humidity areas and it can reflect radiation of 95%.

## Features

- No Asbestos Or Other Carcinogenic Substances
- Prevents Heat Penetration & Provides Effective Vapor Retardant
- Washable Surfaces, Resists Stain and Abuse
- Lighter, Smoother & More Uniform
- Non-Combustible, & Fire Resistant
- Provides Good Light Reflection.
- Quick & Easy To Install



Available in Tapped Edge

## Product Specifications

THICKNESS	METRIC SIZE (mm)	IMPERIAL SIZE (mm)	PACKING
7.5mm	600 x 600	603 x 603	10pcs / CTN
9mm	600 x 600	603 x 603	8pcs / CTN
9mm	600 x 1200	603 x 1206	6pcs / CTN
12mm	600 x 600	603 x 603	6pcs / CTN
12mm	600 x 1200	603 x 1206	4pcs / CTN

## Technical Information

INDUSTRIAL STANDARD	BS 1230 and ASTM C 36
NON SAGGING	Pro Tiles are resistant to warping buckling
FIRE PROTECTION	Non-combustible (class O) when tested in accordance with the standard of BS 476 part 6 and 7
LIGHT REFLECTANCE	Light reflectance not lower than 75% (LR 1 when tested in accordance with the standard of ASTM E 1477
THERMAL ANALYSIS	ASTM C – 168 (Heat Transfer Coefficient: 0.22 W/m K)



# PROTILE™ VINYL LAMINATE



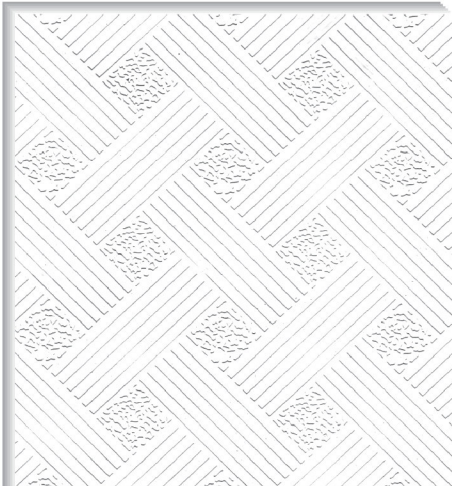
Frost



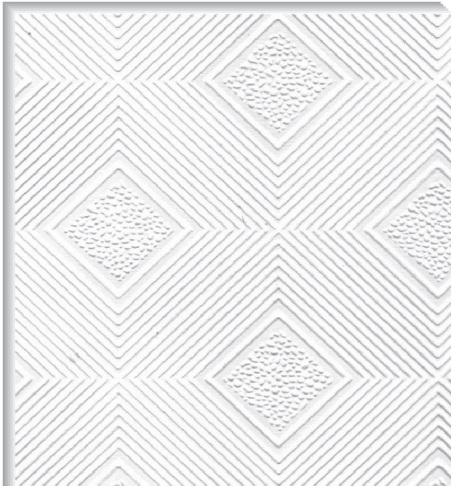
Granular



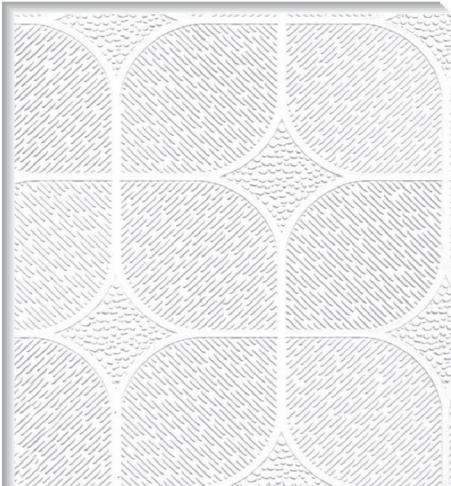
Elefoil



Bamboo



Al-Islam



Almas



Indus



Axis



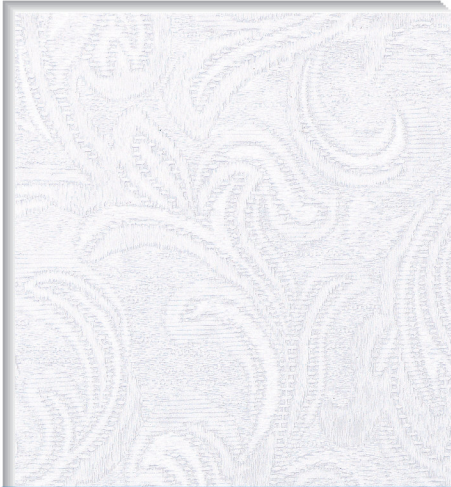
Sapphire



# GYPSUM CEILING TILES



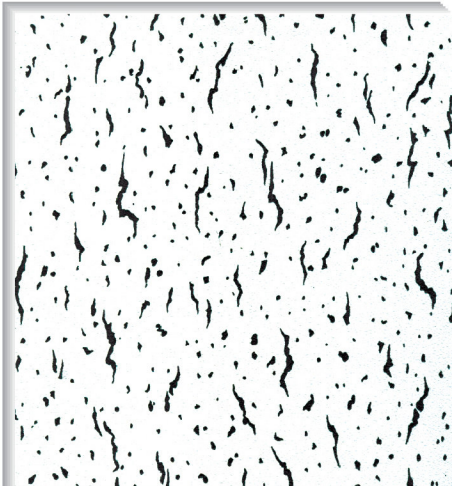
Al-Aqsa



Flora



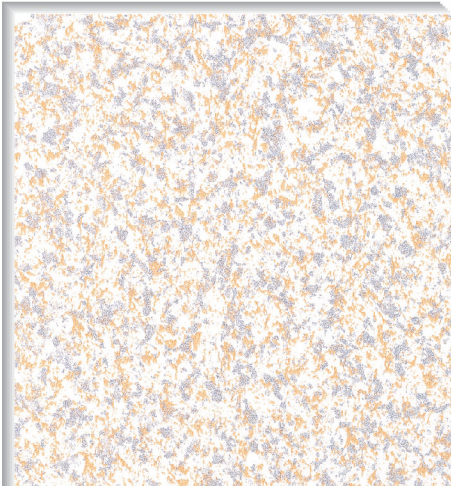
Maze



Fissured



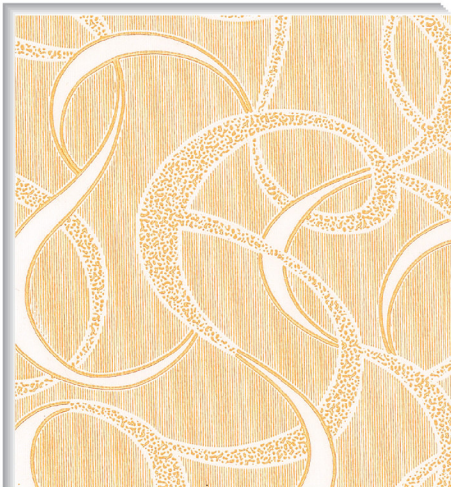
Oak



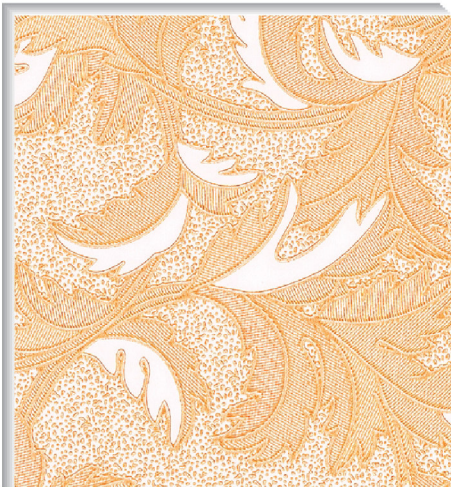
Silver Sand



Waves Gold

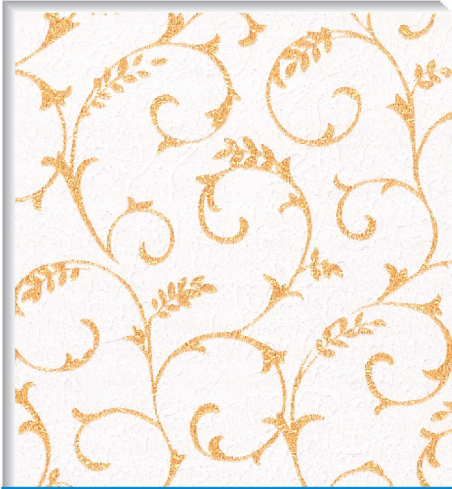


Crescent Gold



Palm Gold

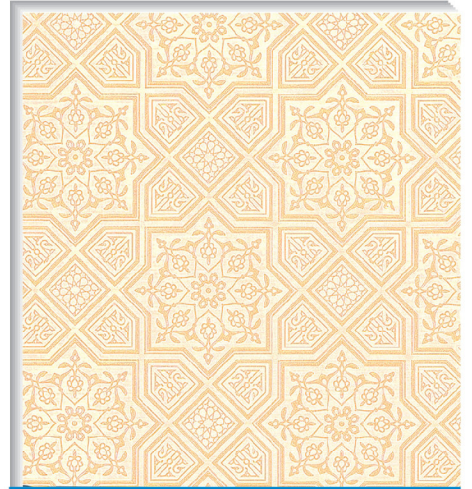




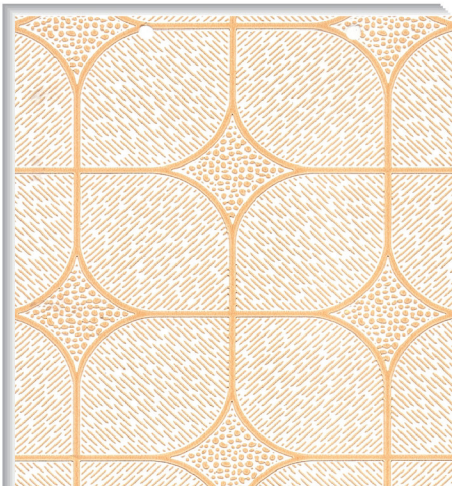
Royal



Bamboo Gold



Al-Aqsa Gold



Almas Gold



Bridge Gold



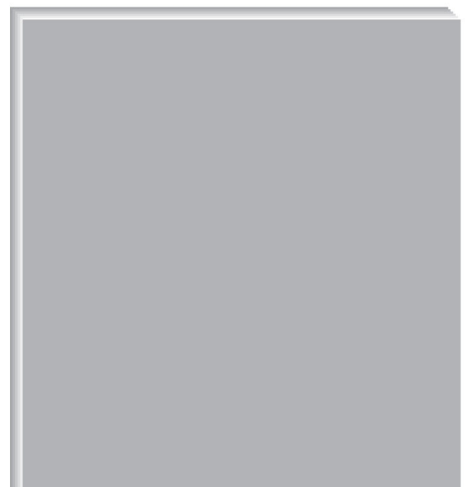
Axis Gold



Indus Gold



Dux Gold



Aluminum Foil





## HEAD OFFICE

Suite # 105, Business & Finance Centre,  
I.I Chundrigar Road, Karachi, Pakistan.  
UAN: +92-21-111-332-497  
T: +92-21-3243 4308, 3241 3832, 3246 7890  
F: +92-21-3242 3721  
E: info@arishdrywall.com

## REGIONAL OFFICE

Suite # 519, 5th Floor, Silver Oaks F10,  
Islamabad, Pakistan.  
Tel: +92 301 873 4684

[WWW.ARISHDRYWALL.COM](http://WWW.ARISHDRYWALL.COM)  
[www.facebook.com/Arishdrywall](http://www.facebook.com/Arishdrywall)

A PRODUCT OF  
**LODHIA**  
G Y P S U M  
ISO 9001 : 2008



"Arish", ProTile is the Registered Trademark of Lodhia Gypsum Industries (Pvt) Ltd.  
© Lodhia Gypsum Industries - All Rights Reserved